

# Shell Exploration & Production

Waste Management Map  
Exploration and Production Licensed Activities  
Shell Brasil Ltda.

Oct/07





# Presentation

The Waste Management encompasses all waste flow, from its generation, collection, storage and transportation up to its final disposal. The operation of monitoring and mapping are included in this document. The operational information presented by this Waste Management Map is significant for the phases of storage, transportation and final disposal of waste generated by the Oil and Natural Gas Exploration and Production activities of Shell Brasil Exploração e Produção (SBEP).

The generated residues are transported to support bases for temporary storage, transportation and final destination.

All waste management procedures of SBEP operations are previously licensed and approved by the environmental agency (IBAMA), according to the legislation in effect. The noncompliance with the applicable laws, and the procedures agreed with IBAMA as well, is subject to penalty and loss of the operation license.

The following major elements of the Waste Management can not be altered, or replaced, without prior notice to the SBEP's HSSE - Environment staff:

- Procedures defined on the waste monitoring.
- Support bases authorized to receive the residues of the activity
- Waste manager companies
- Final destination companies

The alteration or replacement of any information related to the above mentioned components must be preceded by consultation with the HSSE - Environment team of SBEP to forward the consent to IBAMA.

The waste unloading may take place in two land bases:

- Companhia Portuária de Vila Velha - CPVV, on the Espírito Santo coast (Espírito Santo State).
- BRASCO Logística Offshore, on the Rio de Janeiro coast (Rio de Janeiro State).

At the CPVV base, the waste management is performed by the company Vitória Ambiental Engenharia e Tecnologia S/A. At the BRASCO base, the waste management is carried out by BRASCO Logística Offshore itself.

The present document comprises three parts: Waste Management Flowchart; Waste Monitoring; Recipients - Operation Licenses.

The Waste Management Flowchart pictures the practice adopted by the contracted managers and indicates the transporters and recipients used for each type of waste. The Waste Monitoring presents information concerning the waste class (NBR 10.004), temporary storage and final destination. Recipients - Operation Licenses includes all information regarding the companies licensed for the waste transportation and final destination, as well as the licenses in force with the respective effectiveness term and the service provided.

## Contracted Managers

### **Vitória Ambiental Engenharia e Tecnologia S/A**

Waste Management Flowchart.....	2
Waste Monitoring .....	4
Recipients - Operation Licenses .....	6

### **Brasco Logística Offshore**

Waste Management Flowchart .....	10
Waste Monitoring .....	12
Recipients - Operation Licenses .....	14

**Contracted Managers**  
**Vitória Ambiental Engenharia e Tecnologia S/A**

Rua José Luiz Gabeira, 110 – Barro Vermelho

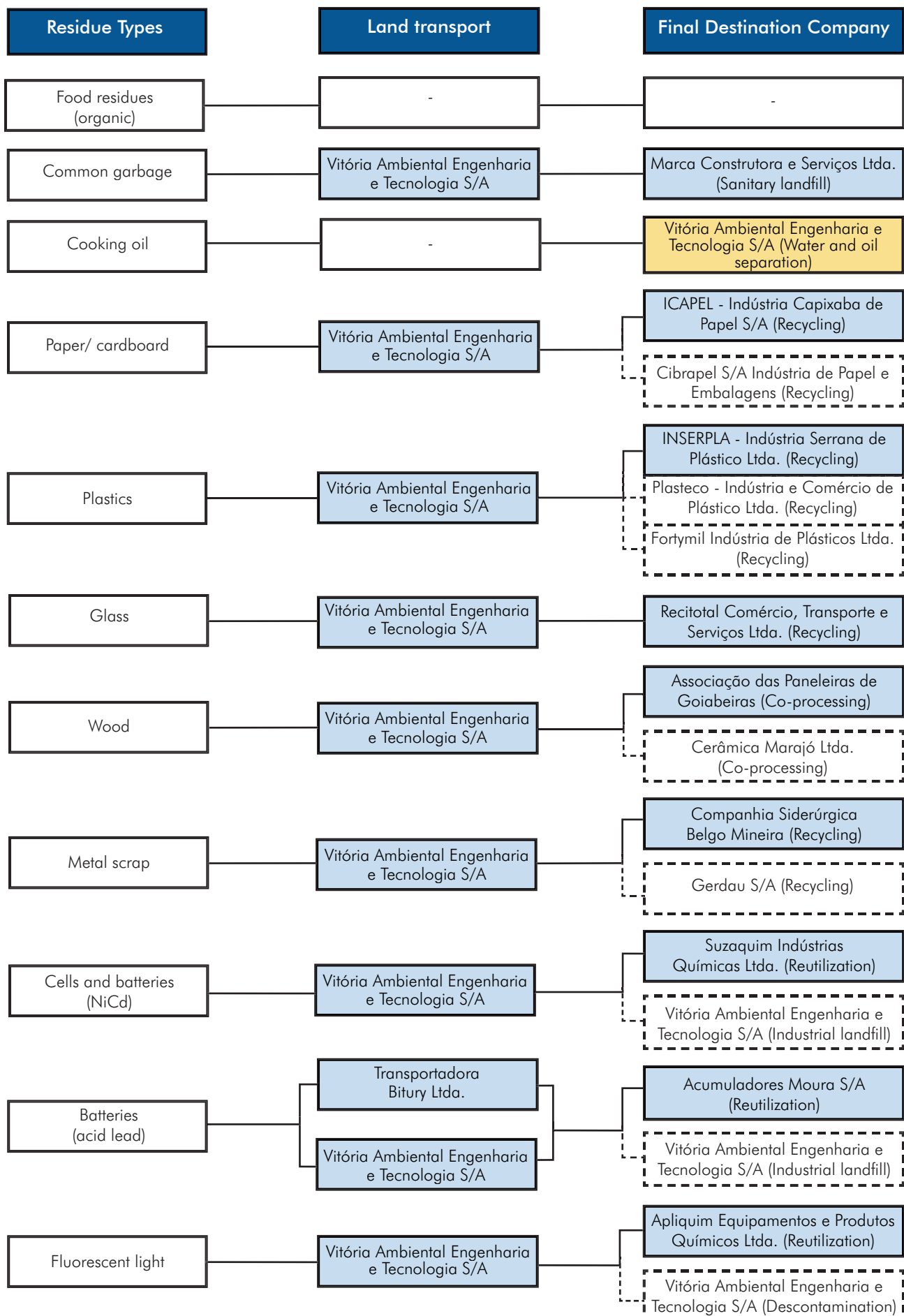
Vitória/ES – Cep.:29055-470

Tel/Fax: (27)3335-4700


e-mail: [vitoriambiental@vitoriambiental.com.br](mailto:vitoriambiental@vitoriambiental.com.br)

# Vitória Ambiental Engenharia e Tecnologia S/A

## Waste Management Flowchart

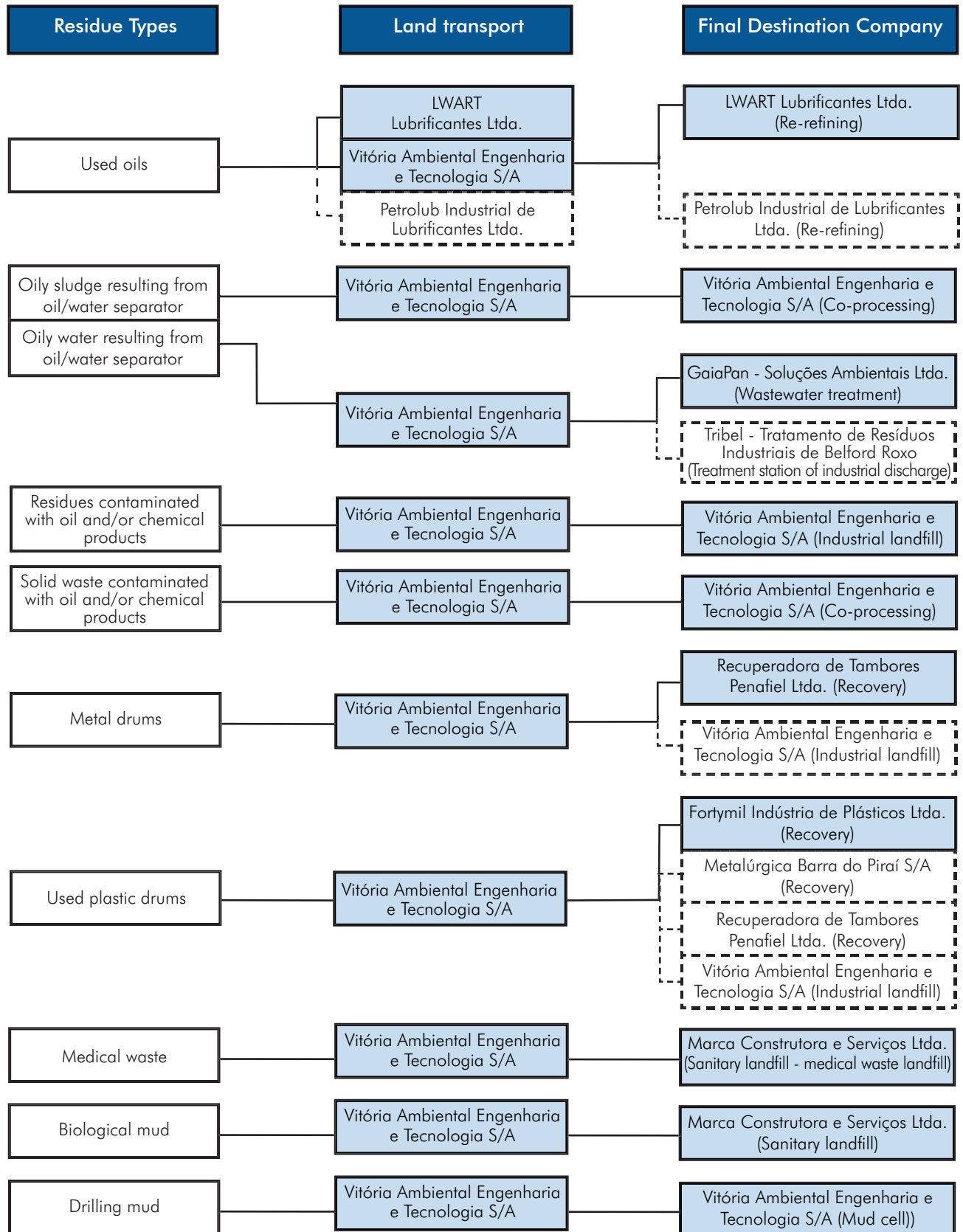


 High priority companies for waste destination

 Subject to short-term update

# Vitória Ambiental Engenharia e Tecnologia S/A


## Waste Management Flowchart



# Waste Monitoring

Residue Types	NBR 10.004 Classification	Generation Area	Sea Transport	Land Transport	Temporary Storage	Treatment	Final Destination Company
Food residues (organic)	Class IIA	Kitchen	-	-	-	Discharge to sea after grinding, according to MARPOL 73/78	-
Common Garbage	Class IIA	Kitchen, bedrooms, dining area and offices	Support vessel	Vitória Ambiental Engenharia e Tecnologia S/A	Vitória Ambiental Engenharia e Tecnologia S/A	Sanitary landfill	Marca Construtora e Serviços Ltda.
Cooking oil	Class IIA	Kitchen	Support vessel	-	Vitória Ambiental Engenharia e Tecnologia S/A	Water and oil separation system of the operation unit	Vitória Ambiental Engenharia e Tecnologia S/A
Paper / cardboard	Class IIB	Platform office supply, dedicated and support vessels	Support vessel	Vitória Ambiental Engenharia e Tecnologia S/A	Vitória Ambiental Engenharia e Tecnologia S/A	Recycling	ICAPEL - Indústria Capixaba de Papel S/A
							Cibrapel S/A Indústria de Papel e Embalagens
Plastics	Class IIB	Plastic packaging from the platform operational routine and from dedicated and support vessels	Support vessel	Vitória Ambiental Engenharia e Tecnologia S/A	Vitória Ambiental Engenharia e Tecnologia S/A	Recycling	INSERPLA - Indústria Serrana de Plástico Ltda.
							Plasteco - Indústria e Comércio de Plástico Ltda.
							Fortymil Indústria de Plásticos Ltda.
Glass	Class IIB	Glass packaging from the platform operational routine and from dedicated and support vessels	Support vessel	Vitória Ambiental Engenharia e Tecnologia S/A	Vitória Ambiental Engenharia e Tecnologia S/A	Recycling	Recitotal Comércio, Transporte e Serviços Ltda.
Wood	Class IIB	Wood packaging from the platform operational routine and from dedicated and support vessels	Support vessel	Vitória Ambiental Engenharia e Tecnologia S/A	Vitória Ambiental Engenharia e Tecnologia S/A	Co-processing	Associação das Paneleiras de Goiabeiras
							Cerâmica Marajó Ltda.
Metal scrap	Class IIB	Platform and dedicated and support vessels maintenance procedures	Support vessel	Vitória Ambiental Engenharia e Tecnologia S/A	Vitória Ambiental Engenharia e Tecnologia S/A	Recycling	Companhia Siderúrgica Belgo Mineira
							Gerdaul S/A
Cells and batteries (NiCd)	Class I	Platform and dedicated and support vessels equipment	Support vessel	Vitória Ambiental Engenharia e Tecnologia S/A	Vitória Ambiental Engenharia e Tecnologia S/A	Encapsulation / Industrial landfill	Vitória Ambiental Engenharia e Tecnologia S/A
						Reutilization	Suzaquim Indústrias Químicas Ltda.
Batteries (acid lead)	Class I	Platform and dedicated and support vessels equipment	Support vessel	Vitória Ambiental Engenharia e Tecnologia S/A	Vitória Ambiental Engenharia e Tecnologia S/A	Encapsulation / Industrial landfill	Vitória Ambiental Engenharia e Tecnologia S/A
				Transportadora Bitury Ltda.	Comal - Comercial de Acumuladores e Componentes Ltda.	Reutilization	Acumuladores Moura S/A
Fluorescent lights	Class I	Platform and dedicated and support vessels lighting	Support vessel	Vitória Ambiental Engenharia e Tecnologia S/A	Vitória Ambiental Engenharia e Tecnologia S/A	Decontamination	Vitória Ambiental Engenharia e Tecnologia S/A
						Reutilization	Apliquim Equipamentos e Produtos Químicos Ltda.

 High priority companies for waste destination

 Subject to short-term update

# Waste Monitoring

Residue Types	NBR 10.004 Classification	Generation Area	Sea Transport	Land Transport	Temporary Storage	Treatment	Final Destination Company
Used oils	Class I	Platform and dedicated and support vessels equipment and motors	Support vessel	LWART Lubrificantes Ltda.	LWART Lubrificantes Ltda.	Re-refining	<b>LWART Lubrificantes Ltda.</b>
				Vitória Ambiental Engenharia e Tecnologia S/A	Vitória Ambiental Engenharia e Tecnologia S/A	Re-refining	Petrolub Industrial de Lubrificantes Ltda.
				Petrolub Industrial de Lubrificantes Ltda.			
Oily residues	Class I	Oily sludge resulting from oil/water separator	Support vessel	Vitória Ambiental Engenharia e Tecnologia S/A	Vitória Ambiental Engenharia e Tecnologia S/A	Co-processing	<b>Vitória Ambiental Engenharia e Tecnologia S/A</b>
		Oily water resulting from oil/water separator	Support vessel	Vitória Ambiental Engenharia e Tecnologia S/A	Vitória Ambiental Engenharia e Tecnologia S/A	Wastewater treatment	<b>GaiaPan - Soluções Ambientais Ltda.</b>
						Treatment station of industrial discharge	Tribel - Tratamento de Resíduos Industriais de Belford Roxo
Residues contaminated with oil and/or chemical products	Class I	Regular response activity of the platform, and dedicated and support vessels, to oil spill emergency	Support vessel	Vitória Ambiental Engenharia e Tecnologia S/A	Vitória Ambiental Engenharia e Tecnologia S/A	Industrial landfill	<b>Vitória Ambiental Engenharia e Tecnologia S/A</b>
Solid waste contaminated with oil, subject to co-processing	Class I	Regular response activity of the platform, and dedicated and support vessels, to oil spill emergency	Support vessel	Vitória Ambiental Engenharia e Tecnologia S/A	Vitória Ambiental Engenharia e Tecnologia S/A	Co-processing	<b>Vitória Ambiental Engenharia e Tecnologia S/A</b>
Metal drums	Class I	Platform and dedicated and support vessels supply logistics	Support vessel	Vitória Ambiental Engenharia e Tecnologia S/A	Vitória Ambiental Engenharia e Tecnologia S/A	Industrial landfill	Vitória Ambiental Engenharia e Tecnologia S/A
						Recovery	<b>Recuperadora de Tambores Penafiel Ltda.</b>
Used plastic drums	Class I	Platform and dedicated and support vessels supply logistics	Support vessel	Vitória Ambiental Engenharia e Tecnologia S/A	Vitória Ambiental Engenharia e Tecnologia S/A	Recovery	Metalúrgica Barra do Pirai S/A
							<b>Fortymil Indústria de Plásticos Ltda.</b>
							Recuperadora de Tambores Penafiel Ltda.
						Industrial landfill	Vitória Ambiental Engenharia e Tecnologia S/A
Medical waste	Class I	Platform, dedicated and support vessels outpatient clinics	Support vessel	Vitória Ambiental Engenharia e Tecnologia S/A	Vitória Ambiental Engenharia e Tecnologia S/A	Sanitary landfill (medical waste cell)	<b>Marca Construtora e Serviços Ltda.</b>
Biological mud	Class IIA	Sewage treatment system	Support vessel	Vitória Ambiental Engenharia e Tecnologia S/A	Vitória Ambiental Engenharia e Tecnologia S/A	Sanitary landfill	<b>Marca Construtora e Serviços Ltda.</b>
Drilling mud	Class IIA	Platform drilling activity	Support vessel	Vitória Ambiental Engenharia e Tecnologia S/A	Vitória Ambiental Engenharia e Tecnologia S/A	Mud cell	<b>Vitória Ambiental Engenharia e Tecnologia S/A</b>

## Recipients - Operation Licenses

Corporate Name	Address	OL	Effectiveness	Service Provided
Acumuladores Moura S/A	Sítio do Gavião, S/N - Zona Rural - Belo Jardim - PE Tel.: (81) 3726-1996	CPRH 03664/2006	12/06/2007	Production of plastic components for automotive batteries, refined soft lead, lead alloy and battery scrap recycling.
Apliquim Equipamentos e Produtos Químicos Ltda.	Av. Irene Karcher, 1.201 - Betel - Paulínia - SP Tel.: (19) 3884-8140	CETESB 37000354	03/07/2010	Chemical industry - Mercury recovery.
Associação das Paneleiras de Goiabeiras	Rua Leopoldo Gomes Sales - Goiabeiras Velhas - Vitória - ES Tel.: (27) 3327-0519	Environmental Authorization IEMA 015/07	11/20/2007	Use of wood as energetic consumables.
Cerâmica Marajó Ltda.	Rodovia BR 101, Km 277 - Chácara Pinhão - Tanguá - RJ Tel.: (21) 2747-1205	FEEMA 010285	01/17/2011	Wood residue collection, transportation and beneficiation for own use as fuel.
Cibrapel S/A Indústria de Papel e Embalagens	Rua Comandante Bacelar, 731 - Centro - Guapimirim - RJ Tel.: (21) 2632-2313	FEEMA 008025	02/23/2010	Operation of paper production from scraps.
Comal - Comercial de Acumuladores e Componentes Ltda.	Av. Marechal Mascarenhas de Moraes, 1.639 - Térreo e Pavimento 1 - Ilha de Santa Maria - Vitória - ES Tel.: (27) 3200-3390 / 3325-8225	SEMMA 0173/2004	03/10/2008	Wholesale trade of electric accumulators (batteries) and their components, vehicles accessories as well as technical services for installing and reviewing its commercialized products.
Companhia Siderúrgica Belgo Mineira	Rua Leopoldina, 900 - Vasco da Gama - Cariacica - ES Tel.: (27) 3246-6000	IEMA 012/2002	12/26/2006 - Renewal Protocol n. 07364/06 Certificate 009/07	Steel laminate and dowel production.
Fortymil Indústria de Plásticos Ltda.	Rua Severino Tescarollo, 785 - D. I. A. Rella - Itatiba - SP Tel.: (11) 4894-8934	CETESB 60000801	12/06/2008	Plastic residue recycling.
GaiaPan - Soluções Ambientais Ltda.	Rua Nelson da Silva, 288 - D.I. de Santa Cruz - 19ª RA - Santa Cruz - Rio de Janeiro - RJ Tel.: (21) 2418-1031 / 2418-1033 / 2418-1032	FEEMA 005650	03/11/2009	Operate the installation related to the industrial and sanitary wastewater treatment activity(ies).
Gerdau S/A	Av. João XXIII, 6.777 - Santa Cruz - Rio de Janeiro - RJ Tel.: (21) 2414-6000	FEEMA 004227	0/10/2009	Steel production, mainly from iron scrap recycling and, complementarily, from solid pig iron.
ICAPEL - Indústria Capixaba de Papel S/A	Av. Coronel Manoel Nunes, 294 - Laranjeiras - Serra - ES Tel.: (27) 2104-2900 / 2104-2901	SEMMA 221/2005	07/06/2009	Paper, cardboard and pulp industry.
INSERPLA - Indústria Serrana de Plástico Ltda.	Chácara Cavada S/N - Galpão 03 - São Marcos - Serra - ES Tel.: (27) 3291-7955	SEMMA 145/2004	9/30/2008	Plastics recycling, industrialization, transformation and commercialization.
LWART Lubrificantes Ltda.	Rua Padre Manuel da Nóbrega, 20 - Interlagos - Linhares - ES Tel.: (27) 3373-2639 / 3372-0618	IEMA 204/2006	7/25/2010	Hazardous load collection and transportation - used lube oil.
	Rua Capitão Guymener, 1.535 - Distrito Industrial - Xerém - RJ Tel.: (21) 2679-1040	FEEMA 002958	8/27/2008	Collection, transportation and storage of lube oil used for re-refining.
	Av. Lençóis Pta-Usina São João - Acesso à Rodovia Marechal Rondon - Km 303,5 - Lençóis Paulista - SP Tel.: (14) 3269-5000	CETESB 085661	No effectiveness - Inspection Certificate n. 1125257 as of 02/08/2006	Lube oil re-refining.

## Recipients - Operation Licenses

Corporate Name	Address	OL	Effectiveness	Service Provided
Marca Construtora e Serviços Ltda.	Rodovia BR 101, Km 282 - Bairro Nova Rosa da Penha - Cariacica - ES Tel.: (27) 2123-7706	IEMA 094/2004	8/31/2008	Cell for medical waste disposal.
	Rodovia BR 101, Km 282 - Bairro Nova Rosa da Penha - Cariacica - ES Tel.: (27) 2123-7706	IEMA 120/2005	06/09/2009	Cell VII - phase A operation for class IIA waste.
Metalúrgica Barra do Piraí S/A	Estrada Manoel Coutinho de Carvalho, 3.380 - Campo Bom - Barra do Piraí - RJ Tel.: (24) 2447-9759 / 2447-9828	FEEMA 005929	06/09/2009	Operate the recycling unit for used high density polyethylene plastic drums.
Petrolub Industrial de Lubrificantes Ltda.	Rua Padre Manuel da Nóbrega, 61 - Interlagos - Linhares - ES Tel.: (27) 3373-5310	IEMA 207/2005	03/08/2009	Used lube oil collection and transportation.
	Rodovia BR 040, Km 461 - Sete Lagoas - MG Tel.: (31) 3775-1144	FEAM 015	01/11/2008	Transportation of hazardous waste (used and contaminated lube oils, burned oils, re-refining basic oil).
	Rodovia BR 040, Km 461 - Sete Lagoas - MG Tel.: (31) 3775-1144	FEAM 173	04/04/2008	Lube oil re-refining.
Plasteco Indústria e Comércio de Plástico Ltda.	Rua Seis, 218 - Quadra E - Lote 09 - CIVIT II - Serra - ES Tel.: (27) 3244-6803	IEMA 389/2006	10/24/2010	Plastics recycling, industrialization, transformation and commercialization.
Recitotal Comércio, Transporte e Serviços Ltda.	Av. Jaraguá, 10 - Lote 1 - Quadra 17 - Bairro do Cumbica - Guarulhos - SP Tel.: (11) 6482-1526 / 6483-4143	CETESB 15002361	08/10/2009	Glass scrap business and service provided to third parties.
Recuperadora de Tambores Penafiel Ltda.	Rua Monte Castelo, 1.373 - Lote 37/38 - Quadra 36 - Jardim Gramacho - Duque de Caxias - RJ Tel.: (21) 2674-3048	FEEMA 002877	4/30/2009	Transportation, cleaning and recovery of plastic drums, iron drums and contaminated containers.
Suzaquim Indústrias Químicas Ltda.	Rua Raphael da Anunciação Fontes - Sítio do Una - Suzano - SP Tel.: (11) 3159-2929	CETESB 26001545	7/13/2008	Salts and metal oxides production.
Transportadora Bitury Ltda.	Rua Regina Alves, 204 - Tancredo Neves - Belo Jardim - PE Tel.: (81) 3726-1407	CPRH 02964/2006	10/10/2007	Road transportation of class I and II loads.
Tribel - Tratamento de Resíduos Industriais de Belford Roxo	Estrada Boa Esperança, 650 - Parte - Belford Roxo - RJ Tel.: (21) 2762-5203	FEEMA 004011	07/04/2008	Industrial wastewater treatment station.
Vitória Ambiental Engenharia e Tecnologia S/A	Rodovia Washington Luiz, 15.919 - Quadra 7 - Lote 3 - Parque Abdalla Chama - 2º Distrito - Campos Eliseos - Duque de Caxias - RJ Tel.: (21) 2776-8895	FEEMA 002764	1/29/2008	Transportation and storage of up to 2,500 tons/year of industrial waste.
	Rodovia ES 351, Km 10 - Putiri - Serra - ES Tel.: (27) 3338-3709	IEMA 067/2004	6/28/2008	Collection and transportation of class I, IIA and IIB industrial waste - liquid industrial waste and medical waste.
	Rodovia ES 351, Km 10 - Putiri - Serra - ES Tel.: (27) 3338-3709	IEMA 023/2005	8/18/2008	Industrial landfill (1st phase).
	Rodovia ES 351, Km 10 - Putiri - Serra - ES Tel.: (27) 3338-3709	IEMA 013/2006	1/18/2010	Blending unit of residues for co-processing.



## **Contracted Managers Brasco Logística Offshore**

Rua Engenheiro Fábio Goulart, 302 e 605 - Parte - Contíguos  
Ilha da Conceição / Niterói-RJ - Cep: 24.050-090

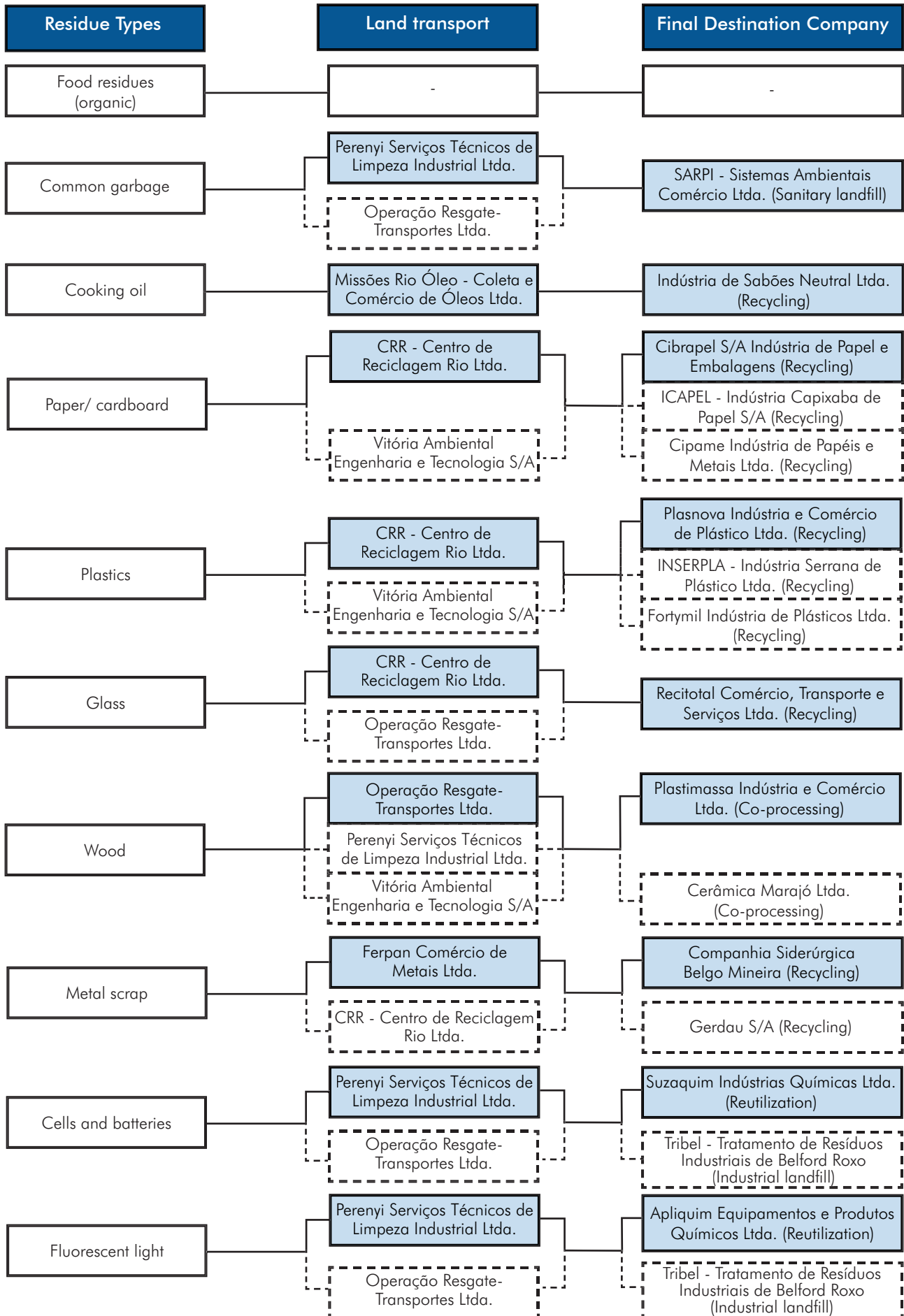
Tel: (+55 21) 2718 9265

Fax: (+55 21) 2718 9253

e-mail: [sms@brasco.com.br](mailto:sms@brasco.com.br)

# Brasco Logística Offshore

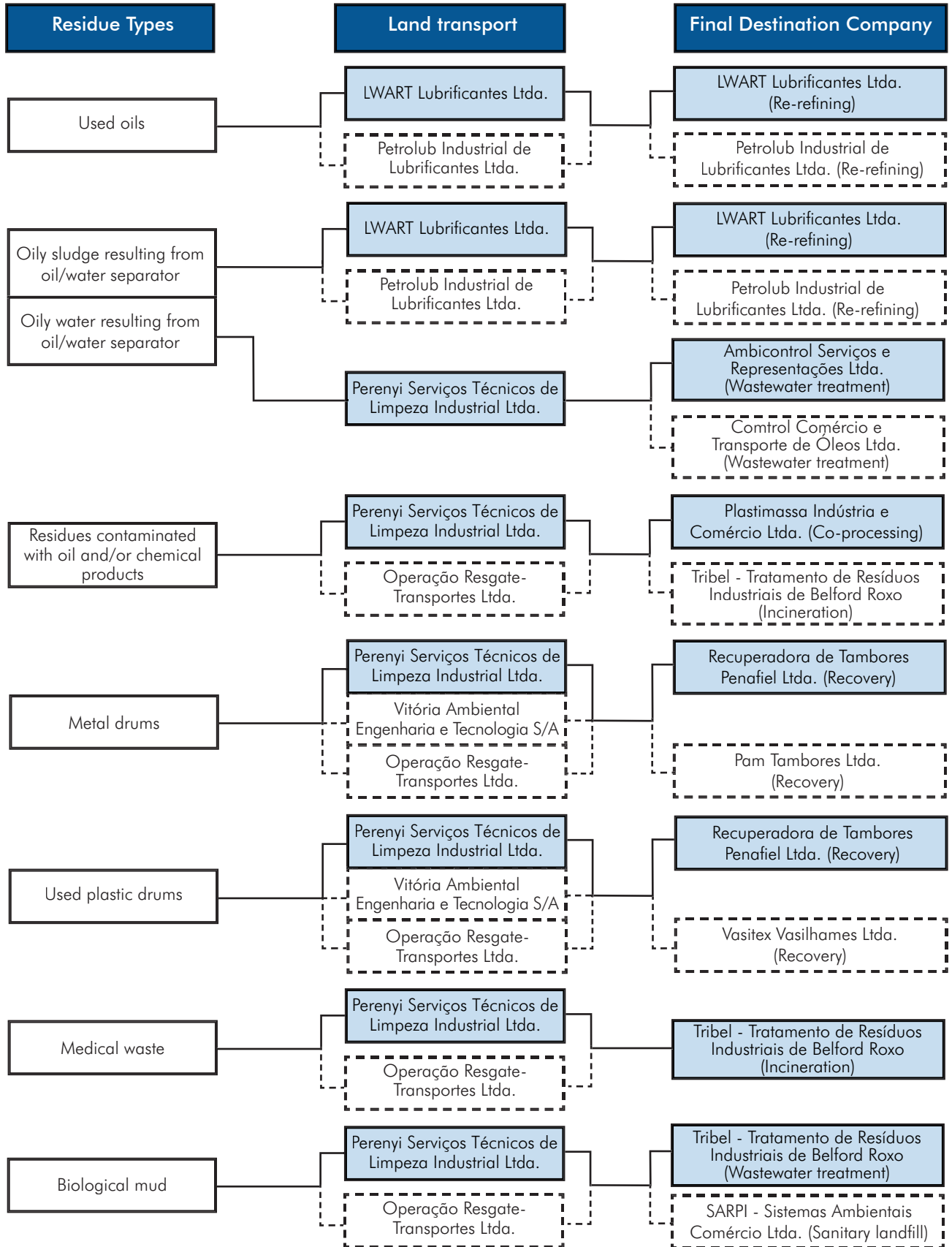
## Waste Management Flowchart



 High priority companies for waste destination

# Brasco Logística Offshore

## Waste Management Flowchart



High priority companies for waste destination

# Waste Monitoring

Residue Types	NBR 10.004 Classification	Generation area	Sea Transport	Land Transport	Temporary Storage	Treatment	Final Destination Company	
Food residues (organic)	Class IIA	Kitchen	-	-	-	Discharge to sea after grinding, according to MARPOL 73/78	-	
Common Garbage	Class IIA	Kitchen, bedrooms, dinning area and offices	Support vessel	Perenyi Serviços Técnicos de Limpeza Industrial Ltda.	Brasco Logística Offshore	Sanitary landfill	<b>SARPI - Sistemas Ambientais Comércio Ltda.</b>	
				Operação Resgate-Transportes Ltda.				
Cooking oil	Class IIA	Kitchen	Support vessel	Missões Rio Óleo - Coleta e Comércio de Óleos Ltda.	Missões Rio Óleo - Coleta e Comércio de Óleos Ltda.	Recycling	<b>Indústria de Sabões Neutral Ltda.</b>	
Paper / Cardboard	Class IIB	Platform office supply, dedicated and support vessels	Support vessel	CRR - Centro de Reciclagem Rio Ltda.	CRR - Centro de Reciclagem Rio Ltda.	Recycling	<b>Cibrapel S/A Indústria de Papel e Embalagens</b>	
				Vitória Ambiental Engenharia e Tecnologia S/A	Brasco Logística Offshore		ICAPEL - Indústria Capixaba de Papel S/A	
							Cipame Indústria de Papéis e Metais Ltda.	
Plastics	Class IIB	Plastic packaging from the platform operational routine and from dedicated and support vessels	Support vessel	CRR - Centro de Reciclagem Rio Ltda.	CRR - Centro de Reciclagem Rio Ltda.	Recycling	<b>Plasnova Indústria e Comércio de Plástico Ltda.</b>	
				Vitória Ambiental Engenharia e Tecnologia S/A	Brasco Logística Offshore		INSERPLA Indústria Serrana de Plástico Ltda.	
							Fortymil Indústria de Plásticos Ltda.	
Glass	Class IIB	Glass packaging from the platform operational routine and from dedicated and support vessels	Support vessel	CRR - Centro de Reciclagem Rio Ltda.	CRR - Centro de Reciclagem Rio Ltda.	Recycling	<b>Recitotal Comércio, Transporte e Serviços Ltda.</b>	
				Operação Resgate-Transportes Ltda.	Brasco Logística Offshore			
Wood	Class IIB	Wood packaging from the platform operational routine and from dedicated and support vessels	Support vessel	Operação Resgate-Transportes Ltda.	Brasco Logística Offshore	Co-processing	<b>Plastimassa Indústria e Comércio Ltda.</b>	
				Perenyi Serviços Técnicos de Limpeza Industrial Ltda.				Cerâmica Marajó Ltda.
				Vitória Ambiental Engenharia e Tecnologia S/A				
Metal scrap	Class IIB	Platform and dedicated and support vessels maintenance procedures	Support vessel	CRR - Centro de Reciclagem Rio Ltda.	CRR - Centro de Reciclagem Rio Ltda.	Recycling	Gerdau S/A	
				Ferpan Comércio de Metais Ltda.	Ferpan Comércio de Metais Ltda.		<b>Companhia Siderúrgica Belgo Mineira</b>	
Cells and batteries	Class I	Platform and dedicated and support vessels equipment	Support vessel	Operação Resgate-Transportes Ltda.	Brasco Logística Offshore	Encapsulation / Industrial landfill	Tribel - Tratamento de Resíduos Industriais de Belford Roxo	
				Perenyi Serviços Técnicos de Limpeza Industrial Ltda.	Brasco Logística Offshore	Reutilization	<b>Suzaquim Indústrias Químicas Ltda.</b>	

# Waste Monitoring

Residue Types	NBR 10.004 Classification	Generation area	Sea Transport	Land Transport	Temporary Storage	Treatment	Final Destination Company
Fluorescent Lights	Class I	Platform and dedicated and support vessels lighting	Support vessel	Perenyi Serviços Técnicos de Limpeza Industrial Ltda.	Brasco Logística Offshore	Reutilization	<b>Apliquim Equipamentos e Produtos Químicos Ltda.</b>
				Operação Resgate-Transportes Ltda.	Brasco Logística Offshore	Industrial landfill	Tribel - Tratamento de Resíduos Industriais de Belford Roxo
Used oils	Class I	Platform and dedicated and support vessels equipment and motors	Support vessel	LWART Lubrificantes Ltda.	Brasco Logística Offshore	Re-refining	<b>LWART Lubrificantes Ltda.</b>
				Petrolub Industrial de Lubrificantes Ltda.	Petrolub Industrial de Lubrificantes Ltda.	Re-refining	Petrolub Industrial de Lubrificantes Ltda.
Oil residues	Class I	Oily sludge resulting from oil/water separator	Support vessel	LWART Lubrificantes Ltda.	Brasco Logística Offshore	Re-refining	<b>LWART Lubrificantes Ltda.</b>
				Petrolub Industrial de Lubrificantes Ltda.	Petrolub Industrial de Lubrificantes Ltda.	Re-refining	Petrolub Industrial de Lubrificantes Ltda.
		Oily water resulting from oil and water separator	Support vessel	Perenyi Serviços Técnicos de Limpeza Industrial Ltda.	Brasco Logística Offshore	Wastewater treatment	<b>Ambicontrol Serviços e Representações Ltda.</b>
							Control Comércio e Transporte de Óleos Ltda.
Residues contaminated with oil and/or chemical products	Class I	Regular response activity of the platform, and of dedicated and support vessels, to oil spill emergency	Support vessel	Perenyi Serviços Técnicos de Limpeza Industrial Ltda.	Brasco Logística Offshore	Co-processing	<b>Plastimassa Indústria e Comércio Ltda.</b>
				Operação Resgate-Transportes Ltda.	Brasco Logística Offshore	Incineration	Tribel - Tratamento de Resíduos Industriais de Belford Roxo
Metal drums	Class I	Platform and dedicated and support vessels supply logistics	Support vessel	Perenyi Serviços Técnicos de Limpeza Industrial Ltda.	Brasco Logística Offshore	Recovery	<b>Recuperadora de Tambores Penafiel Ltda.</b>
				Operação Resgate-Transportes Ltda.			Pam Tambores Ltda.
				Vitória Ambiental Engenharia e Tecnologia S/A			
Used plastic drums	Class I	Platform and dedicated and support vessels supply logistics	Support vessel	Operação Resgate-Transportes Ltda.	Brasco Logística Offshore	Recovery	Vasitex Vasilhames Ltda.
				Vitória Ambiental Engenharia e Tecnologia S/A			
				Perenyi Serviços Técnicos de Limpeza Industrial Ltda.			<b>Recuperadora de Tambores Penafiel Ltda.</b>
Medical waste	Class I	Platform and dedicated and support vessels outpatient clinics	Support vessel	Perenyi Serviços Técnicos de Limpeza Industrial Ltda.	Brasco Logística Offshore	Incineration	<b>Tribel - Tratamento de Resíduos Industriais de Belford Roxo</b>
				Operação Resgate-Transportes Ltda.			
Biological mud	Class IIA	Sewage treatment system	Support vessel	Perenyi Serviços Técnicos de Limpeza Industrial Ltda.	Brasco Logística Offshore	Wastewater treatment	<b>Tribel - Tratamento de Resíduos Industriais de Belford Roxo</b>
				Operação Resgate-Transportes Ltda.	Brasco Logística Offshore	Industrial landfill	SARPI - Sistemas Ambientais Comércio Ltda.

## Recipients - Operation Licenses

Corporate Name	Address	OL	Effectiveness	Service Provided
Ambicontrol Serviços e Representações Ltda.	Rua Projetada, 14 - Quadra B - Lote 16/17 - Jardim Primavera - Duque de Caxias - RJ Tel.: (21) 2776-3557	FEEMA 00178/2002	05/13/2007 - Renewal Protocol n. 10.022/06	Oil residue cleaning, transportation and treatment.
Apliquim Equipamentos e Produtos Químicos Ltda.	Av. Irene Karcher, 1.201 - Betel - Paulínia - SP Tel.: (19) 3884-8140	CETESB 37000354	03/07/2010	Chemical industry - Mercury recovery.
Cerâmica Marajó Ltda.	Rodovia BR 101, Km 277 - Chácaras Pinhão - Tanguá - RJ Tel.: (21) 2747-1205	FEEMA 010285	01/17/2011	Collection, transportation and beneficiation of wooden residue for own use as fuel.
Cibrapel S/A Indústria de Papel e Embalagens	Rua Comandante Bacelar, 731 - Centro - Guapimirim - RJ Tel.: (21) 2632-2313	FEEMA 008025	02/23/2010	Operate the paper production activity from scraps.
Cipame Comércio e Indústria de Papéis e Metais Ltda.	Estrada do Mendanha, 5.864 - Campo Grande - Rio de Janeiro - RJ Tel.: (21) 2413-7102 / 2413-7835	FEEMA 005685	07/02/2009	Collection, transportation, storage, beneficiation and commercialization activities of recyclable industrial scraps.
Companhia Siderúrgica Belgo Mineira	Rua Leopoldina, 900 - Vasco da Gama - Cariacica - ES Tel.: (27) 3246-6000	IEEMA 012/2002	12/26/2006 - Renewal Protocol n. 07364/06 Certificate 009/07	Steel laminate and dowel production.
Control Comércio e Transporte de Óleos Ltda.	Travessa Braga S/N - Barreto - Niterói - RJ Tel.: (21) 2717-6998	FEEMA 002545	11/24/2008	Collection, sea transportation, beneficiation and commercialization of oily residues and contaminated oil coming from vessels.
CRR - Centro de Reciclagem Rio Ltda.	Av. Senador Vitorino Freire, 305 - Galpão - Coelho Neto - Rio de Janeiro - RJ Tel.: (21) 2253-7191	FEEMA 006277	06/28/2010	Transportation and temporary storage of class I, IIA and IIB industrial waste.
Ferpan Comércio de Metais Ltda.	Rua Rodolfo David Gomes, 180 - Granja dos Cavaleiros - Macaé - RJ Tel.: (21) 2407-9505	FEEMA 006225	07/12/2009	Class I, IIA and IIB waste collection and transportation.
		FEEMA 004450	09/10/2008	Class I, IIA and IIB residue temporary storage.
Fortymil Indústria de Plásticos Ltda.	Rua Severino Tescarollo, 785 - D. I. A. Rella - Itatiba - SP Tel.: (11) 4894-8934	CETESB 60000801	06/12/2008	Plastic residue recycling.
Gerdau S/A	Av. João XXIII, 6.777 - Santa Cruz - Rio de Janeiro - RJ Tel.: (21) 2414-6000	FEEMA 004227	03/10/2009	Steel production, mainly from iron scrap recycling and, complementarily, from solid pig iron.
ICAPEL - Indústria Capixaba de Papel S/A	Av. Coronel Manoel Nunes, 294 - Laranjeiras - Serra - ES Tel.: (27) 2104-2900 / 2104-2901	SEMMA 221/2005	07/06/2009	Paper, cardboard and pulp industry.
Indústria de Sabões Neutral Ltda.	Rua Araucária, 89/270 - Chácaras Rio Petrópolis - Duque de Caxias - RJ Tel.: (21) 2676-1090	FEEMA 010872	04/28/2011	Reception of burned soy oil and manufacturing of soap and soap paste.
INSERPLA - Indústria Serrana de Plástico Ltda.	Chácara Cavada S/N - Galpão 03 - São Marcos - Serra - ES Tel.: (27) 3291-7955	SEMMA 145/2004	09/30/2008	Plastics recycling, industrialization, transformation and commercialization.
LWART Lubrificantes Ltda.	Rua Capitão Guymener, 1.535 - Distrito Industrial - Xerém - RJ Tel.: (21) 2679-1040	FEEMA 002958	08/27/2008	Collection, transportation and storage of lube oil used for re-refining.
	Av. Lençóis Pta-Usina São João - Acesso à Rodovia Marechal Rondon, Km 303,5 - Lençóis Paulista - SP Tel.: (14) 3269-5000	CETESB 085661	No effectiveness - Inspection Certificate n.1125257 as of 02/08/2006	Lube oil re-refining.
Missões Rio Óleo - Coleta e Comércio de Óleos Ltda.	Av. Quatro, 125 - Trevo das Missões - Duque de Caxias - RJ Tel.: (21) 2260-3326	FEEMA 010179	12/21/2010	Collection, transportation and storage of used vegetal oils.

## Recipients - Operation Licenses

Corporate Name	Address	OL	Effectiveness	Service Provided
Operação Resgate-Transportes Ltda.	Estrada do Monan Pequeno, 78 - Pendotiba - Niterói - RJ Tel.: (21) 2616-0914	FEEMA 005173	07/12/2009	Transportation of medical waste, hazardous waste (class I), non-inert (class IIA) and inert (class IIB).
Pam Tambores Ltda.	Rua Atecla Fratucelli Lopes, 5 - Bonsucesso - Guarulhos - SP Tel.: (11) 6436-2400	CETESB 1081278	Inspection Certificate 2005 OL Renewal Process n.26/00116/83 as of 2006.	Plastic drums recovery and plastic materials recycling.
Perenyi Serviços Técnicos de Limpeza Industrial Ltda.	Rua Projetada, 7 - Quadra B - Lote 15 - Jardim Primavera - Duque de Caxias - RJ Tel.: (21) 2676-2375	FEEMA 003764	07/15/2008	Removal, collection and transportation of sanitary sewage system residues and of industrial waste.
Petrolub Industrial de Lubrificantes Ltda.	Rua Projetada S/N - Quadra B - Lote 21/22 - Jardim Primavera - Duque de Caxias - RJ Tel.: (21) 2676-9398	FEEMA 005743	05/27/2009	Temporary storage of lube oil used for re-refining.
	Rodovia BR 040, Km 461 - Sete Lagoas - MG Tel.: (31) 3775-1144	FEAM 015	01/11/2008	Transportation of hazardous waste (used and contaminated lube oil, burned oil for re-refining).
	Rodovia BR 040, Km 461 - Sete Lagoas - MG Tel.: (31) 3775-1144	FEAM 173	04/04/2008	Lube oil re-refining.
Plasnova Indústria e Comércio de Plástico Ltda.	Rua Jacofer, 503 - Bairro do Limão - São Paulo - SP Tel.: (11) 3936-1310 / 3936-1283	CETESB 29002197	08/04/2008	Recycling and manufacturing of plastic products.
Plastimassa Indústria e Comércio Ltda.	Estrada Municipal Adam Blumer, 5.942 - Jardim Esmeralda - Magé - RJ Tel.: (21) 2633-9200	FEEMA 004462	11/13/2008	Beneficiation of class I, IIA and IIB waste for raw material and alternative fuel production; biomass thermal conversion in laboratory scale; organic compound production.
Recitotal Comércio, Transporte e Serviços Ltda.	Av. Jaraguá, 10 - Lote 1 - Quadra 17 - Bairro do Cumbica - Guarulhos - SP Tel.: (11) 6483-4143	CETESB 15002361	08/10/2009	Glass scrap business and services to third parties.
Recuperadora de Tambores Penafiel Ltda.	Rua Monte Castelo, 1.373 - Lote 37/38 - Quadra 36 - Jardim Gramacho - Duque de Caxias - RJ Tel.: (21) 2674-3048	FEEMA 002877	04/30/2009	Transportation, cleaning and recovery of plastic drums, iron drums and contaminated containers.
SARPI - Sistemas Ambientais Comércio Ltda.	Estrada Municipal Luís Macedo Barroso, 2.200 - Mato Dentro - Tremembé - SP Tel.: (12) 3607-2100	CETESB 3002097	09/14/2010	Industrial solid waste landfill.
Suzaquim Indústrias Químicas Ltda.	Rua Raphael da Anunciação Fontes - Sítio do Una - Suzano - SP Tel.: (11) 4748-6202 / 3159-2929	CETESB 26001545	07/13/2008	Production of salts and metal oxides.
Tribel - Tratamento de Resíduos Industriais de Belford Roxo	Estrada Boa Esperança, 650 - Parte - Belford Roxo - RJ Tel.: (21) 2762-5203	FEEMA 005484	03/16/2009	Disposal of hazardous industrial waste (class I) on the fourth cell of the industrial landfill.
	Estrada Boa Esperança, 650 - Parte - Belford Roxo - RJ Tel.: (21) 2762-5203	FEEMA 004011	07/04/2008	Industrial wastewater treatment station.
	Estrada Boa Esperança, 650 - Parte - Belford Roxo - RJ Tel.: (21) 2762-5203	FEEMA 006348	10/25/2009	Incineration of solid, paste and liquid waste, hazardous and non-hazardous, generated by the company itself or coming from third parties.
Vasitex Vasilhames Ltda.	Rua Atecla Fratucelli Lopes, 189 - Bonsucesso - Guarulhos - SP Tel.: (11) 6436-3500	CETESB 15002042	04/04/2009	Recovery of plastic drums and plastic material recycling.
Vitória Ambiental Engenharia e Tecnologia S/A	Rodovia Washington Luiz, 15.919 - Quadra 7 - Lote 3 - Parque Abdalla Chama - 2º Distrito - Campos Elíseos - Duque de Caxias - RJ Tel.: (21) 2776-8895	FEEMA 002764	1/29/2008	Transportation and storage of up to 2,500 tons/year of industrial waste.
	Rodovia ES 351, Km 10 - Putiri - Serra - ES Tel.: (27) 3338-3709	IEMA 067/2004	6/28/2008	Collection and transportation of class I, IIA and IIB industrial waste - liquid industrial waste and medical waste.

